

Viola 1

Sex and Death at Covent Garden

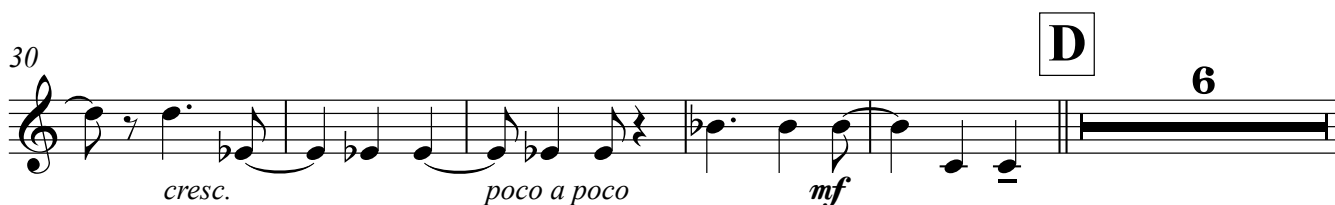
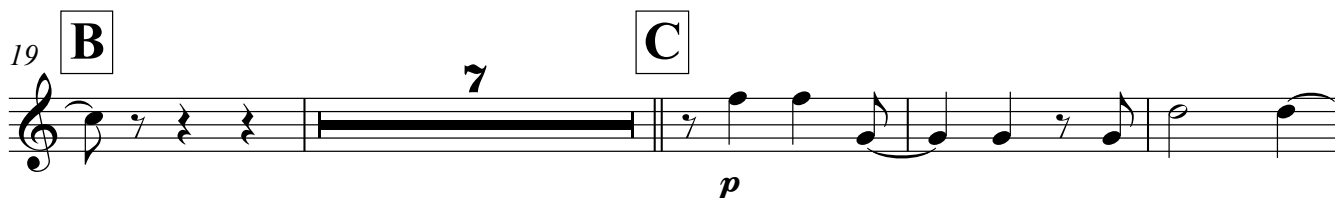
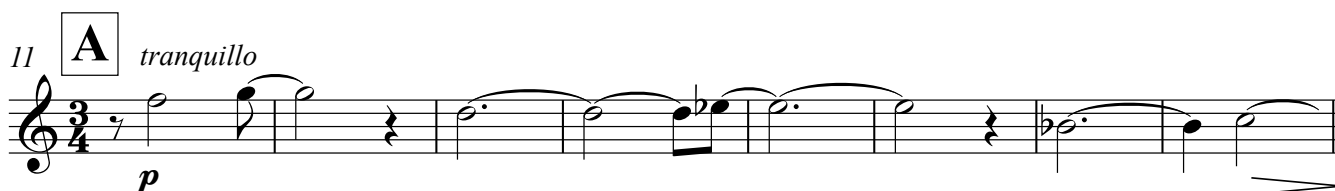
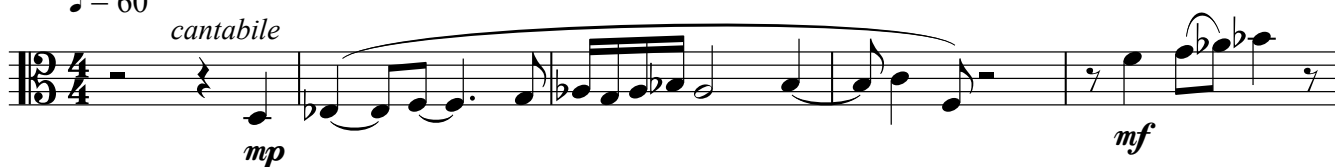
1. Intrada

Lento

Charlie Barber

♩ = 60

cantabile



Charlie Barber - Sex & Death at Covent Garden

2

Viola 1

41

mf *cresc.*

46

f *dim.* *p* *mute in*

E

52 *con sord.*

p

57

Rit. *Attacca* *mute out*

2. Recitative + Aria

♩ = 116

F

63 *senza sord.*

f *2*

68

p *f* *p* *2*

G

76

p *p* *p* *2* *2*

84

p *cresc.*

89 **H**

f *p* *p*

97 **I**

cresc. *f* *p*

104

f *p* *f*

110 **J**

p *p*

116

p *p* *cresc.* *f*

124 **K**

p *f* *p*

131

mf *p*

137 **L**

mf *f*

2

Charlie Barber - Sex & Death at Covent Garden

4

Viola 1

144

mf *cresc.* *f* *legato*

152

M

p *cresc.* *f* *p*

159

f **2**

167

N

3 *mp* **2** *p* *mf*

178

O

p *p* *f*

185

mp *p* *cresc.* *mf*

193

P

p **10**

219 **R**

mf *dim.* *p* *cresc.* *mf* *f*

226 Attacca

dim. *p*

The musical score for measures 226-230 is written on a single staff. Measure 226 begins with a treble clef and a key signature of one flat (B-flat). The melody starts on a half note G4, followed by a quarter note A4, a quarter note B-flat4, and a quarter note A4. A slur covers the first four notes. Measure 227 continues with a half note G4, a quarter note F4, a quarter note E4, and a quarter note D4. A slur covers the last three notes. Measure 228 starts with a half note C4, followed by a quarter note B-flat4, a quarter note A4, and a quarter note G4. A slur covers the last three notes. Measure 229 is a whole note G4. Measure 230 is a whole rest. The piece ends with a double bar line and a 3/4 time signature.

3. Allegro

♩ = 132

233 **S**

239

245

251

257

263 **T**

269

274

p *cresc.* *f* *p* *f* *p* *cresc.* *f*

pp

p

f *pp*

p

cresc.

Detailed description: This block contains the musical notation for measures 233 through 274 of the Viola 1 part. The music is written on a single staff in 12/8 time. It begins with a section marked 'S' (Solo) at measure 233. The notation includes various note values (eighth, sixteenth, and thirty-second notes), rests, and dynamic markings such as *p* (piano), *f* (forte), *pp* (pianissimo), and *cresc.* (crescendo). There are also articulation marks like accents and slurs. A section marked 'T' (Tutti) begins at measure 263. The score concludes at measure 274 with a *cresc.* marking.

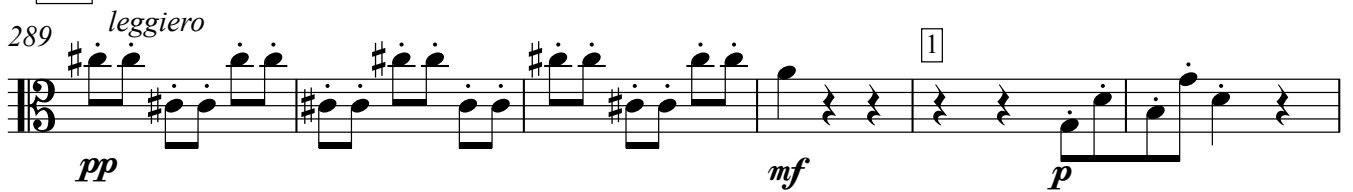
279



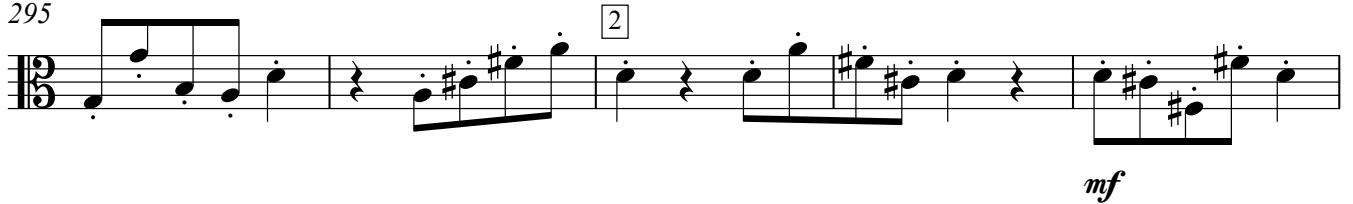
283



U



295

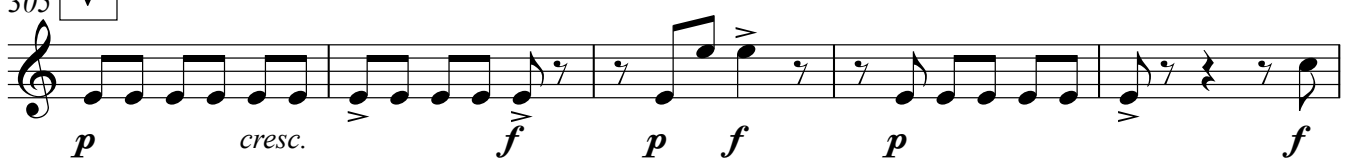


300



305

V



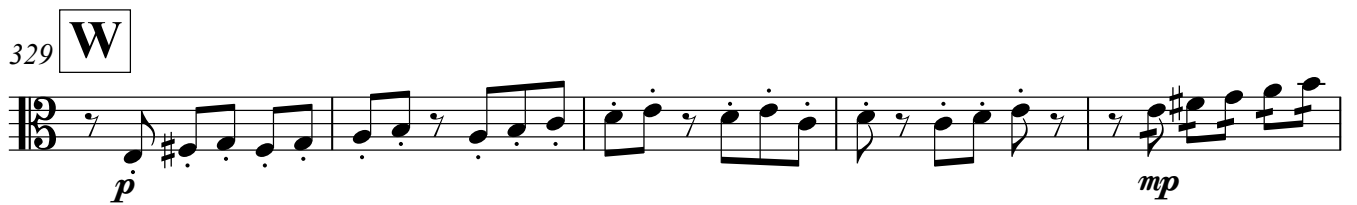
310



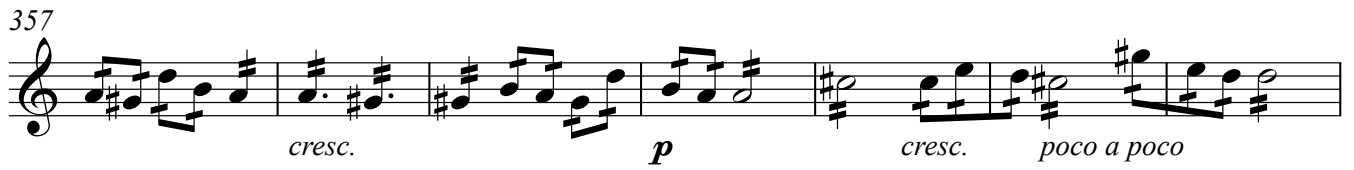
Charlie Barber - Sex & Death at Covent Garden

8

Viola 1



357



cresc. *p* *cresc. poco a poco*

364

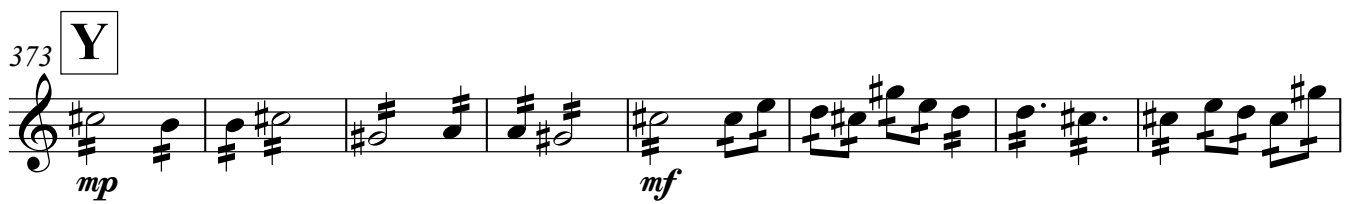


369



f

373 Y



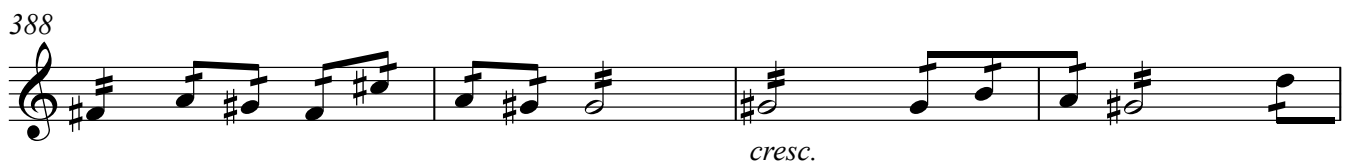
mp *mf*

381



p

388



cresc.

392 Z



f 3

398 *leggiero*

pp

403 *f pp sf*

408 *sf sf cresc. f p legato*

414

422 **AA** *f pp*

428

433 *p*

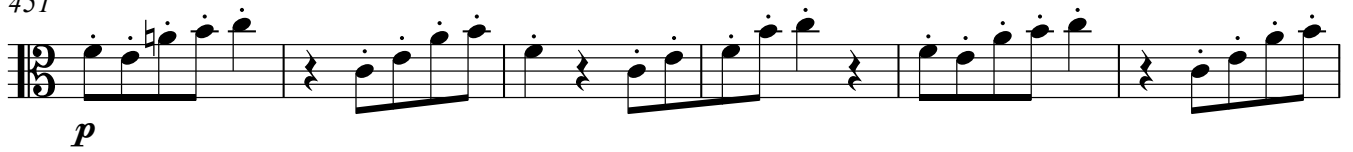
438 *cresc.*

443 *mf*

447 *f*

BB

451



457



463

CC



469



475



480

DD



486

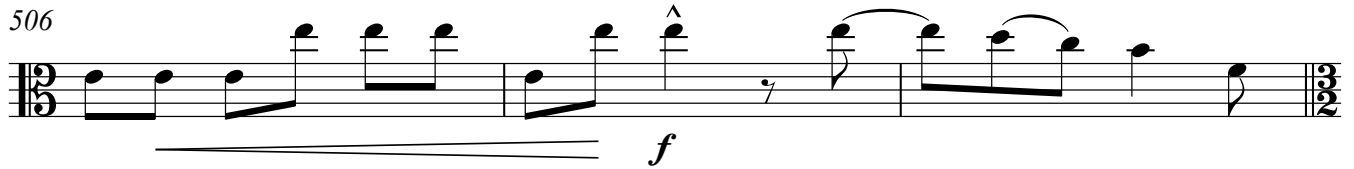


492



497





4. Cadenza

Adagio

$\text{♩} = 60$

